



The 7 Principles of River-Friendly Landscaping

Protect Water and Air Quality

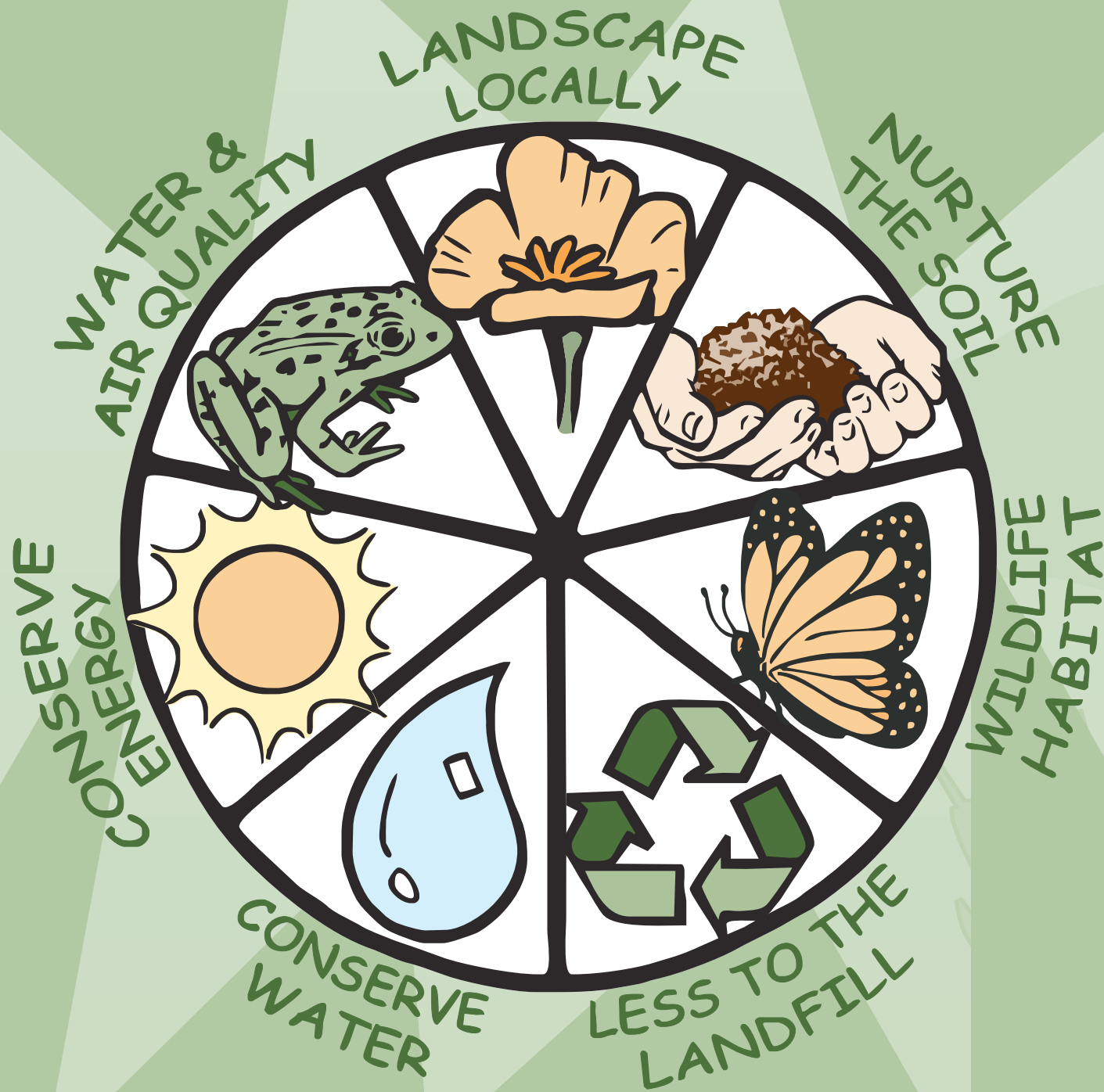
- Choose pest-resistant plant varieties
- Include plants that support beneficial insects
- Use manual tools in place of power tools

Landscape Locally

- Consider climate, sun exposure, and soil type when selecting plants
- Avoid using invasive species

Nurture the Soil

- Amend the soil with compost before planting
- Mulch regularly
- Feed soils naturally; avoid using synthetic and quick release fertilizers



Conserve Energy

- Plant trees to shade homes, paved areas, and air conditioners
- Avoid unnecessary outdoor lighting

Conserve Water

- Minimize/eliminate lawn area
- Grow low-water use California natives or Mediterranean plants
- Design, install, and maintain high efficiency irrigation systems

Landscape for Less to the Landfill

- Keep plant debris on site by grasscycling, mulching, or composting
- Choose plants that can grow to their natural size in the space allotted
- Reduce, reuse, and recycle construction waste (concrete, bricks, etc.) for landscape features

Create and Protect Wildlife Habitat

- Create diversity by choosing California native plants first
- Reduce/eliminate the use of pesticides and herbicides
- Provide water and shelter

www.riverfriendly.org

UC Master Gardeners (916) 875-6913